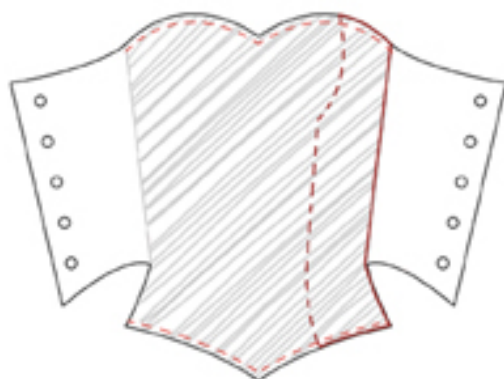
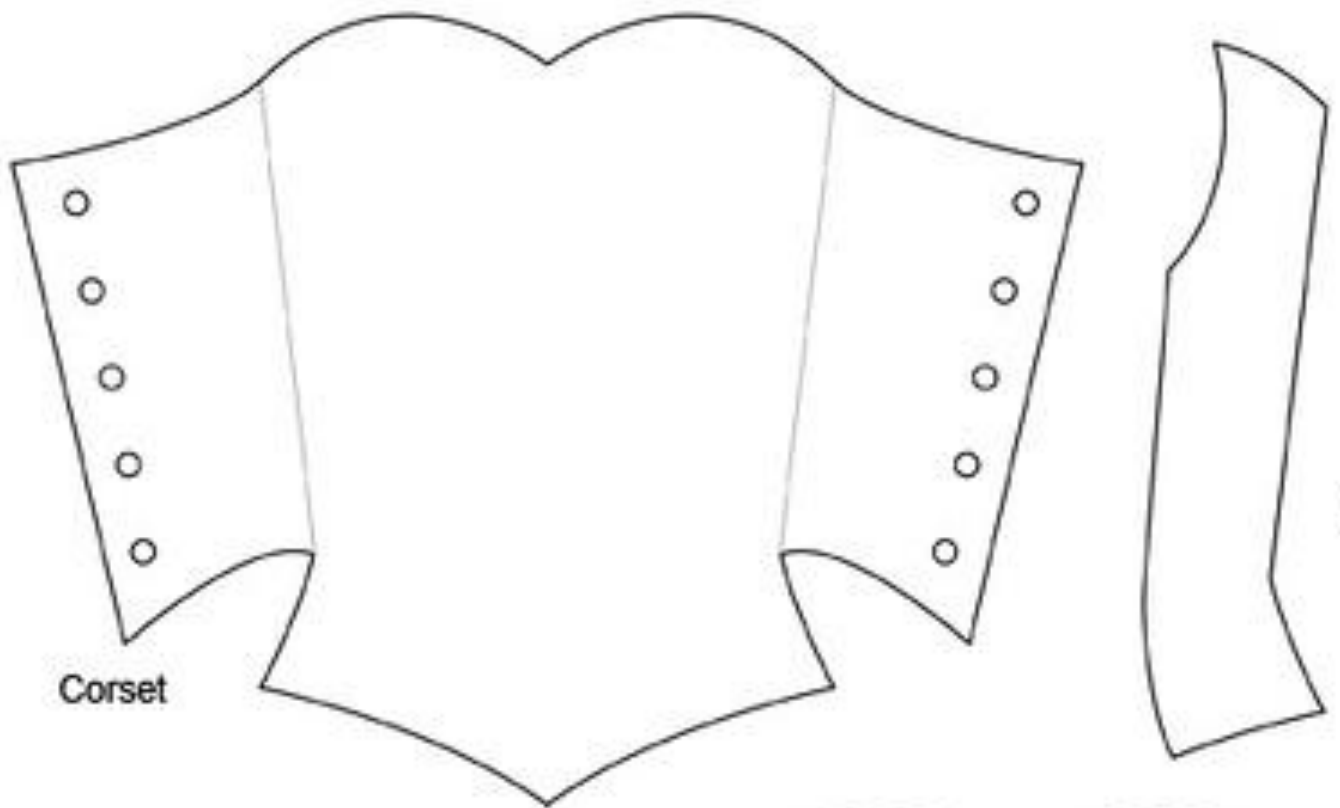


ATC Corset or Card

1. Print out a template on card stock. The "lining" will be used as part of the card and the other pieces will be used to trace around.
2. After cutting out all the pieces take the "inside lining" piece and glue it to a your selected patterned paper. (I run my paper through a xyron.) I usually glue it to a larger piece of patterned paper then trim even with the card stock template piece.
3. Trace the "corset" template onto the back of your selected piece of patterned paper but don't cut it out.
4. Run the "inside lining" piece through the xyron again so that glue will be applied to the plain side of the piece. (That means the patterned paper you just adhered will be facing up.)
5. Adhere the lining piece to the inside back of the corset you just traced on the other piece of patterned paper. (The lining will be adhered to the shaded area as shown in the picture below.)

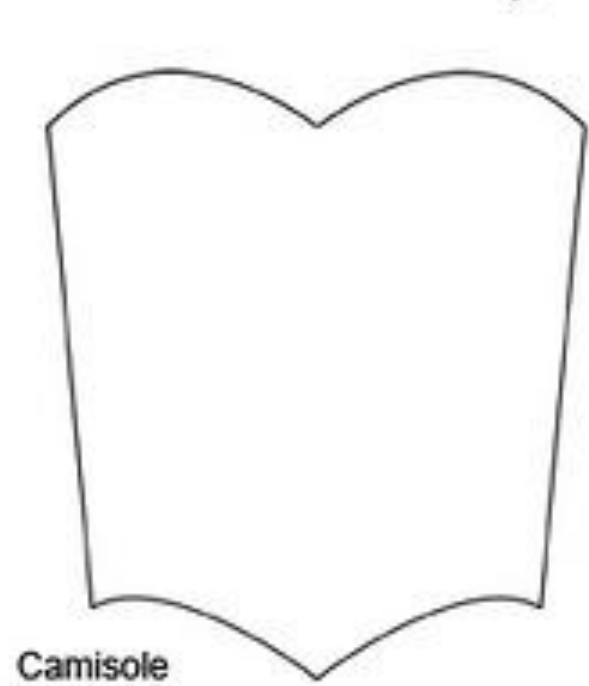


6. Cut out the corset and fold the flaps so they wrap to the front. Also punch out the holes and set your eyelets at this time.
7. Glue the selected trim to the top and bottom edges so that a little shows on the laced side.
8. (OPTIONAL) Take the "stitching" template and flip the corset so that the front is facing up. (Open out the flaps so the eyelets don't get in the way.) Place the template even with the fold line and trace next to it using a tracing wheel that sewers use or a pounce or perforating wheel as shown above. Also trace next to the top and bottom edge on the lining to create stitch lines. (There is also a perf. wheel made by EK Success and looks like a lady bug.)
9. Choose a fiber and lace up the front of the corset. (I prefer to lace from the top down, but either will look good.)
10. Print out or handwrite your ATC info on some card stock then trace around it using the camisole pattern, then insert into the corset. (I cut the camisole out, then discard it, and place the "hole" over the info to center it.)

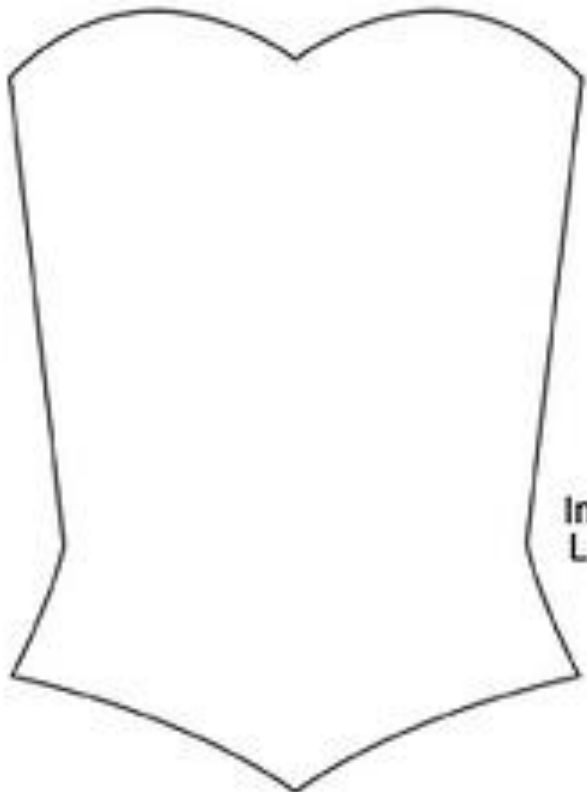


Stitching
Line

Corset



Camisole
(ATC Info)



Inside
Lining